

# Møre and Vøring Basins | MV12

## Geophysical Atlas of the Møre and Vøring Basins 22nd Licensing Round Edition

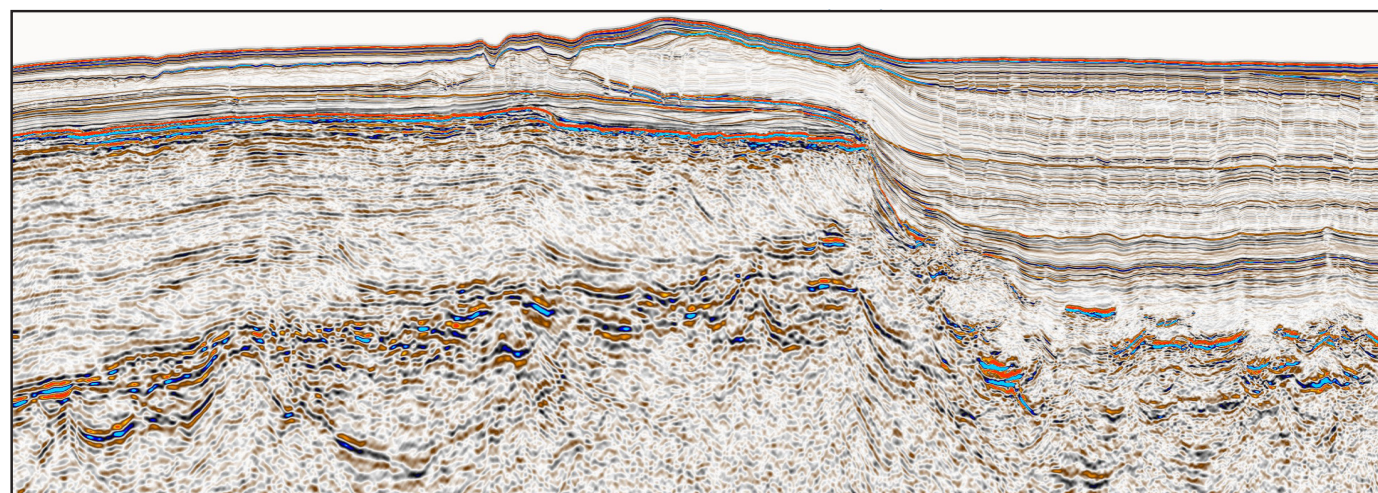
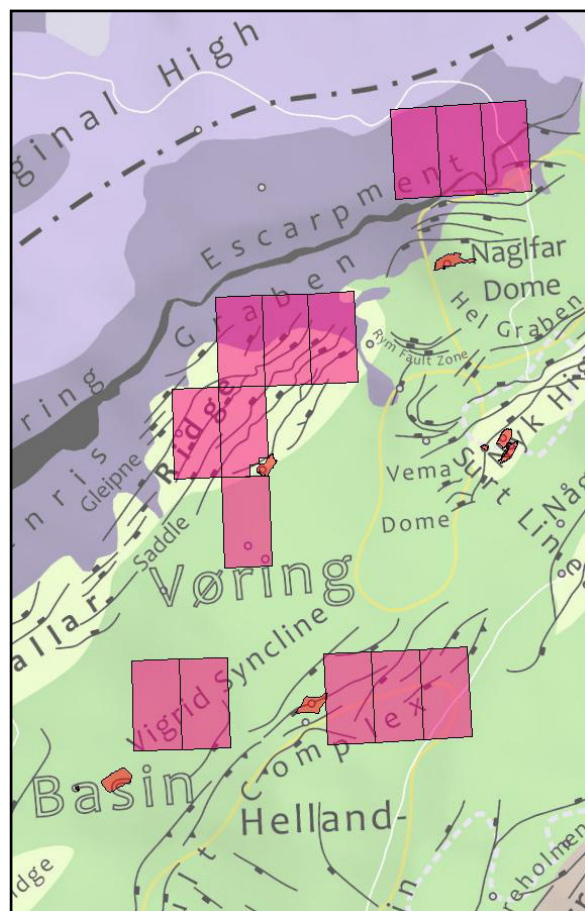
TGS and VBPR are pleased to announce the 22<sup>nd</sup> Licensing Round Edition of the Geophysical Atlas of the Møre and Vøring Basins - an integrated seismic, gravity, and magnetic (SGM) interpretation study.

The 22<sup>nd</sup> Licensing Round Edition focuses on the proposed blocks in the northern Vøring Basin, and production licenses in the outer Vøring and Møre basins.

New seismic data improves imaging and interpretation of intra- and sub-basalt structures. In addition, results from recent seafloor sampling on the NE Atlantic margin increases the probability of pre-Cretaceous highs in the outer Møre and Vøring basins. The results have important implications for the sub-basalt exploration potential in the Møre and Vøring basins.

### Highlights

- Basin structure from integrated seismic, gravity, and magnetic interpretation
- Basin modeling and petroleum potential assessment
- Plate tectonic reconstruction and conjugate margin synthesis
- Development of volcanic complexes, distribution of volcanic facies units, and sediment-lava interaction
- Sub-basalt structure and petroleum potential



*Seismic example from the Vøring Marginal High showing improved imaging of the volcanic complex and sub-basalt structure.*

For more information, contact us:

### TGS

Lensmannsliå 4  
N-1386 Asker, Norway  
Tel: +47 66 76 99 00  
Email: [EURsales@tgsnopec.com](mailto:EURsales@tgsnopec.com)

### VBPR

Forskningsparken  
N-0349 Oslo, Norway  
Tel: +47 22 95 89 24  
Email: [info@vbpr.no](mailto:info@vbpr.no)

