

LABRADOR SEA SEAFLOOR SAMPLING 2014

Highlights

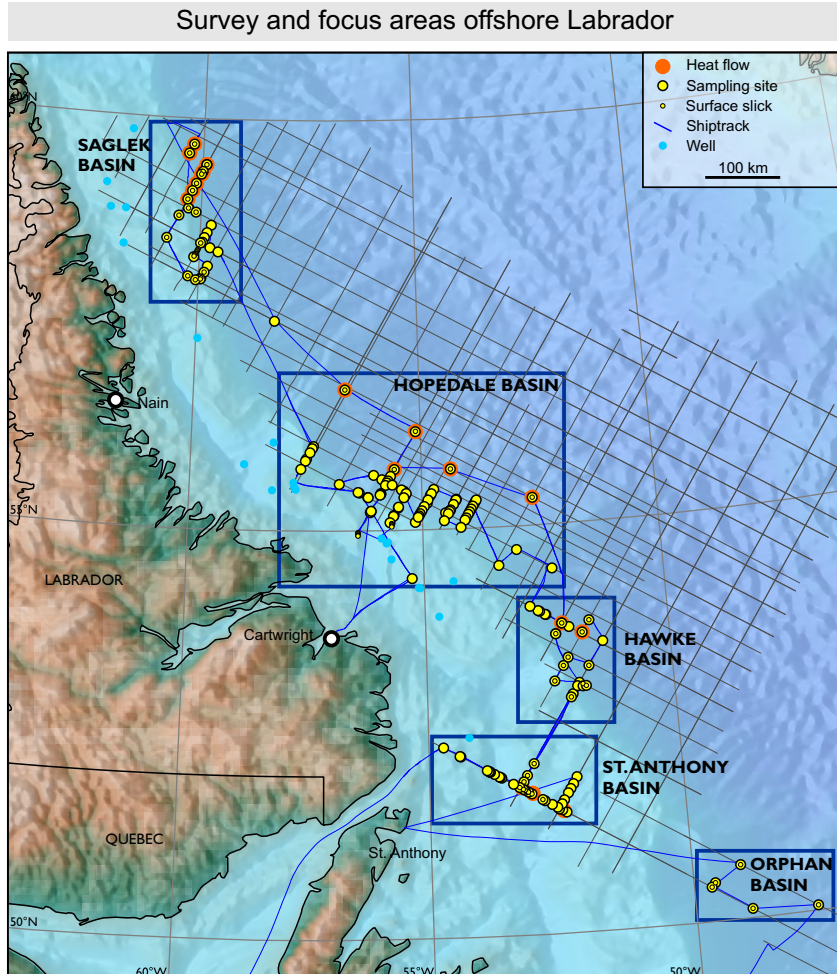
5 focus areas with 184 sampling sites (244.5 m of sediment cores) and 79 water samples
 11 calculated geothermal gradients
 Hydrocarbon anomalies above DHIs and deep structures indicate deep origin of seeping fluids
 Use of three different methods increased analytical measuring range and hydrocarbon anomaly recognition
 Over 900 analytical results for seep studies

Extensive Analytical Program

AGI (Amplified Geochemical Imaging)
 MPOG (Microbial Prospecting for Oil and Gas)
 Seep geochemistry at TDI-Brooks
 APT geochemistry interpretation
 Heatflow and thermal conductivity measurements

Deliverables

Printed reports and appendices
 Digital report and data

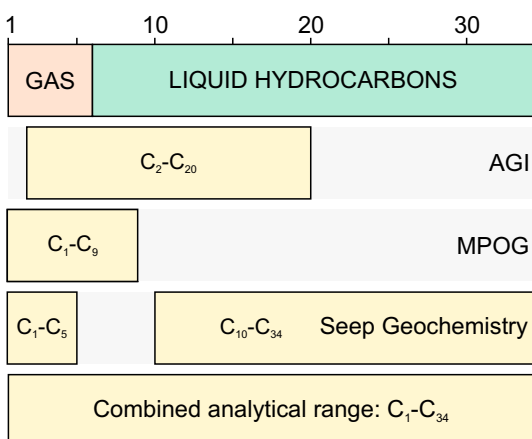


Analytical program

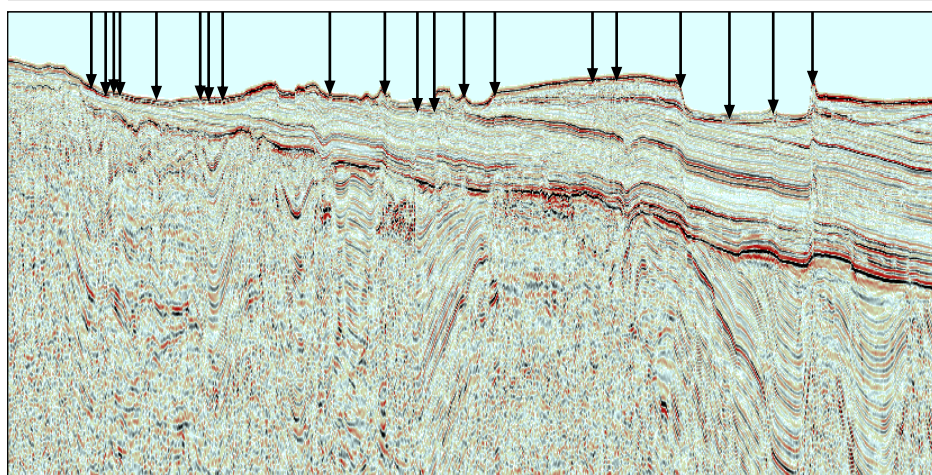
Survey	Sediment Cores		Seep Studies					Surface Slicks	Heat Flows
Basin	Targets	Recovery (m)	Total Scanning Fluorescence	Headspace Gas and Gas chromatography of Extracted Organic Matter	Gas Chromatography Mass Spectrometry	Amplified Geochemical Imaging	Microbial Prospecting for Oil and Gas	Amplified Geochemical Imaging	Volcanic Basin Petroleum Research
St. Anthony	37	64.1	32	33	6	34	34	9	3
Hawke	23	31.9	17	17	5	17	17	12	2
Hopedale	88	103.5	59	59	10	59	61	25	4
Saglek	31	32.6	17	17	9	17	18	28	9
Orphan	5	12.34	5	5	1	5	5	5	0
Total	184	244.5	130	131	31	132	135	79	18

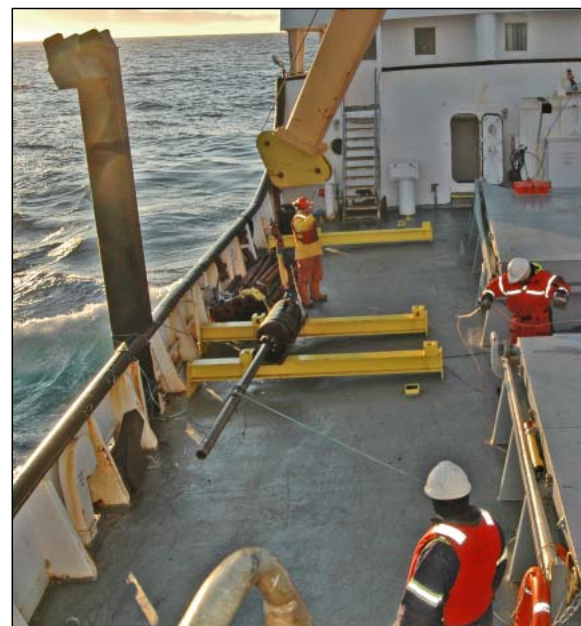
Increasing range of detectable HCs

Number of carbon atoms in chains



Sampling transect





Main reports

- Chapter 1: Executive summary
- Chapter 2: Introduction
- Chapter 3: Operations
- Chapter 4: Explanatory notes
- Chapter 5: Results
- Chapter 6: Integration and conclusions
- Chapter 7: Bibliography

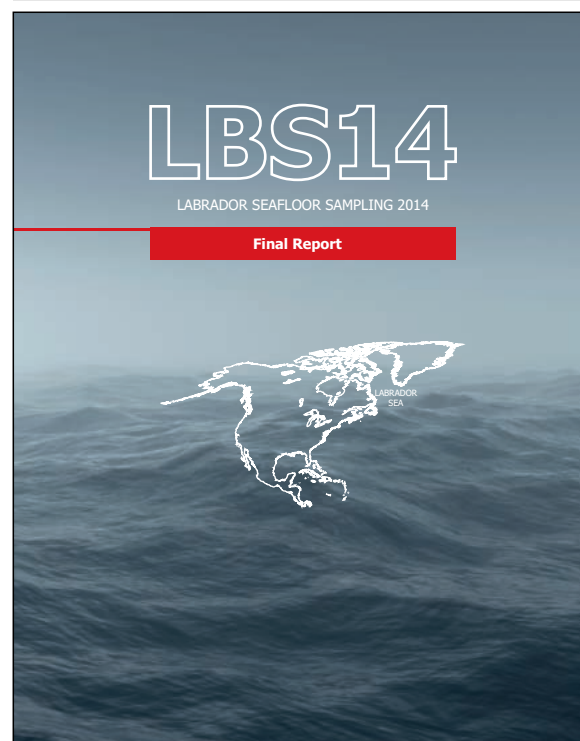
Appendices

- Appendix A: Core descriptions
- Appendix B: Original lab reports
- Appendix C: Organic geochemistry data

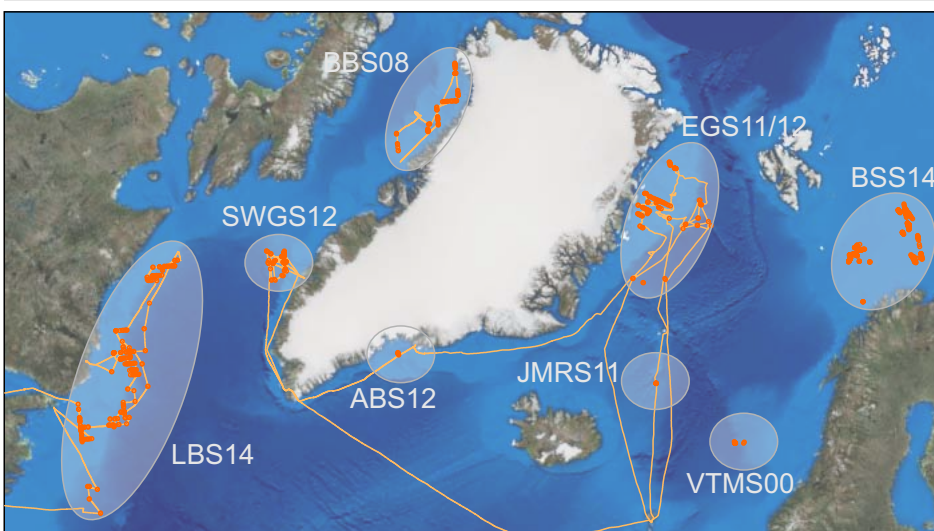
Digital report

- Report volumes and appendices in pdf format
- Project overview in Arc-GIS and powerpoint
- Original and unedited lab reports
- Raw analytical geochemical data (APT)
- Navigation and sub-bottom profiler data

Cruise report



VBPR-TGS sampling cruises in the NE Atlantic



For more information, contact:

TGS
+47 66 76 99 00
EURsales@tgs.com
tgs.com

VBPR
+47 21 08 07 50
info@vbpr.no
vbpr.no